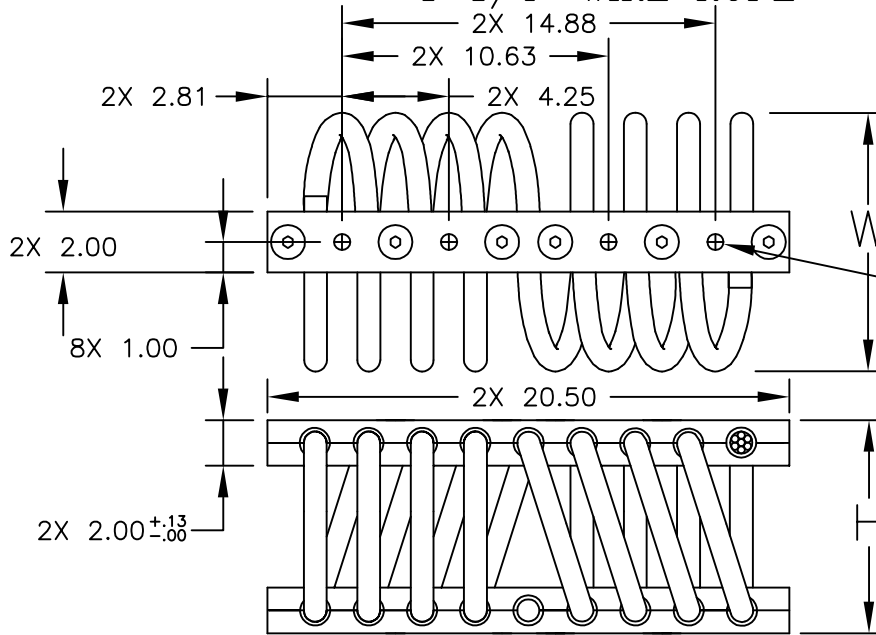


# CB2000 SERIES

1-1/4" WIRE ROPE



- MOUNTING HOLE SUFFIX OPTIONS.
- [ ] BLANK=  $\phi$ .78 THRU 8PL
  - C2=  $\phi$ .78 THRU C'SINK  $\phi$ 1.44 x 82' 8PL
  - T2= #3/4-10 TAP 8PL
  - CT= #3/4-10 TAP 4PL  $\phi$ .78 THRU C'SINK  $\phi$ 1.44 x 82' 4PL
- \* INSERTS ARE NOT AVAILABLE FOR THE LARGER SERIES ISOLATORS

ISOLATOR PART NO.	NOMINAL DIMENSIONS (in)		LOAD MODE	SHOCK AVERAGE K (lb/in)	VIBRATION AVERAGE K (lb/in)	MAX. RATED DYNAMIC TRAVEL (in)
	H $\pm$ .25	W(REF)				
CB2000-10-[ ]	7.00	8.25	COMPRESSION SHEAR/ROLL 45 DEG. C/R	10000 5100 4500	18600 5000 12000	2.00 2.20 3.20
CB2000-12-[ ]	8.50	9.75	COMPRESSION SHEAR/ROLL 45 DEG. C/R	5900 2900 3200	12000 3000 8000	3.20 3.20 4.00

**NOTES**

- ALL DIMENSIONS ARE IN INCHES. INTERPRET PER ANSI Y14
- ALL DIMENSIONS ARE NOMINAL AND FOR REFERENCE ONLY

OTHER MATERIALS, COMPOUNDS, OR FINISHES WITH EQUAL OR SUPERIOR PROPERTIES MAY BE SUBSTITUTED AS THEY BECOME AVAILABLE.

**CERTIFIED FOR:**

JOB NAME: \_\_\_\_\_  
 CUSTOMER: \_\_\_\_\_  
 CUSTOMER P.O.: \_\_\_\_\_  
 SALES ORDER: \_\_\_\_\_

**MODEL CB2000 SERIES  
 WIRE ROPE ISOLATOR**



**THE VMC GROUP**  
*The Power of Together*  
 Bloomingdale, NJ 07403  
 Houston, TX 77041

SCALE:

NONE

SHEET:



DRAWING NO.:

REVISION