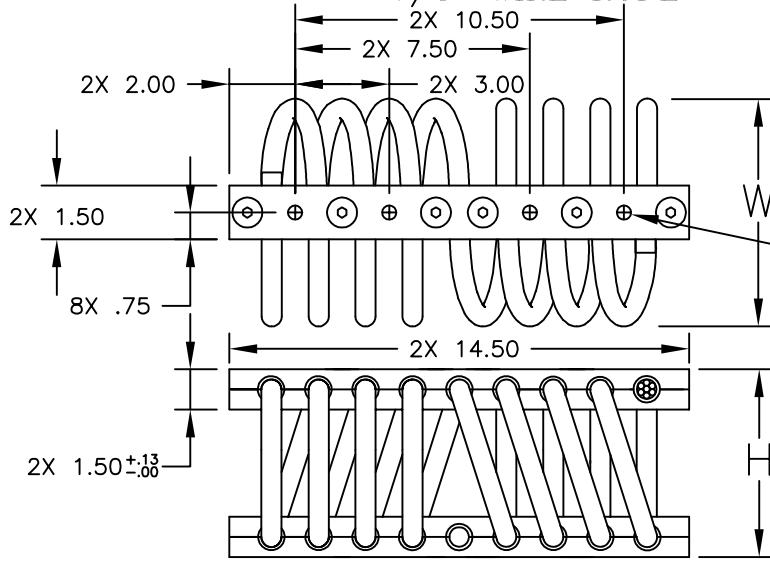


# CB1700 SERIES

7/8" WIRE ROPE



- MOUNTING HOLE SUFFIX OPTIONS.
- [ ] BLANK=  $\phi$ .53 THRU 8PL
  - C2=  $\phi$ .53 THRU C'SINK  $\phi$ .99 x 82' 8PL
  - T2= #1/2-13 TAP 8PL
  - CT= #1/2-13 TAP 4PL  $\phi$ .53 THRU C'SINK  $\phi$ .99 x 82' 4PL

\* INSERTS ARE NOT AVAILABLE FOR THE LARGER SERIES ISOLATORS

ISOLATOR PART NO.	NOMINAL DIMENSIONS (in)		LOAD MODE	SHOCK AVERAGE K (lb/in)	VIBRATION AVERAGE K (lb/in)	MAX. RATED DYNAMIC TRAVEL (in)
	H $\pm$ .25	W(REF)				
CB1700-15-[ ]	5.25	5.50	COMPRESSION SHEAR/ROLL 45 DEG. C/R	7565 3890 4495	20000 3750 14250	2.00 2.00 2.40
CB1700-17-[ ]	6.00	6.50	COMPRESSION SHEAR/ROLL 45 DEG. C/R	5815 2795 3140	14000 2675 8750	2.40 2.40 3.20
CB1700-20-[ ]	6.25	7.00	COMPRESSION SHEAR/ROLL 45 DEG. C/R	3695 1775 2035	8500 1550 5500	2.80 2.80 3.60
CB1700-30-[ ]	7.50	8.25	COMPRESSION SHEAR/ROLL 45 DEG. C/R	1925 900 1140	4750 815 3250	3.60 3.60 4.80
CB1700-40-[ ]	8.50	9.25	COMPRESSION SHEAR/ROLL 45 DEG. C/R	1285 545 675	3650 600 1900	4.00 4.00 6.40

NOTES

1. ALL DIMENSIONS ARE IN INCHES. INTERPRET PER ANSI Y14
2. ALL DIMENSIONS ARE NOMINAL AND FOR REFERENCE ONLY

OTHER MATERIALS, COMPOUNDS, OR FINISHES WITH EQUAL OR SUPERIOR PROPERTIES MAY BE SUBSTITUTED AS THEY BECOME AVAILABLE.

**CERTIFIED FOR:**

JOB NAME: \_\_\_\_\_  
 CUSTOMER: \_\_\_\_\_  
 CUSTOMER P.O.: \_\_\_\_\_  
 SALES ORDER: \_\_\_\_\_

**MODEL CB1700 SERIES  
 WIRE ROPE ISOLATOR**



**THE VMC GROUP**  
 The Power of Together  
 Bloomingdale, NJ 07403  
 Houston, TX 77041

SCALE:

NONE

SHEET:



DRAWING NO.:

REVISION