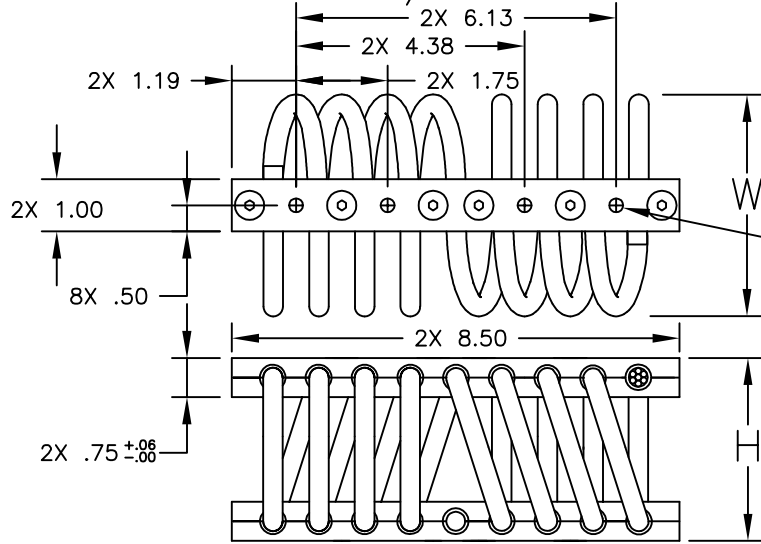


CB1400 SERIES

1/2" WIRE ROPE



- MOUNTING HOLE SUFFIX OPTIONS.
- [] BLANK= ϕ .328 THRU 8PL
 - C2= ϕ .328 THRU
C'SINK ϕ .66 x 82' 8PL
 - I2= #1/4-28 INSERTS 8PL
 - CI= #1/4-28 INSERTS 4PL
 ϕ .328 THRU
C'SINK ϕ .66 x 82' 4PL

ISOLATOR PART NO.	NOMINAL DIMENSIONS (in)		LOAD MODE	SHOCK AVERAGE K (lb/in)	VIBRATION AVERAGE K (lb/in)	MAX. RATED DYNAMIC TRAVEL (in)
	H \pm .09	W(REF)				
CB1400-15-[]	3.25	4.00	COMPRESSION SHEAR/ROLL 45 DEG. C/R	2650 1080 1435	6525 1475 4350	1.40 1.60 2.40
CB1400-17-[]	3.50	4.13	COMPRESSION SHEAR/ROLL 45 DEG. C/R	2090 865 1120	5000 1075 3500	1.60 1.80 2.80
CB1400-20-[]	3.75	4.75	COMPRESSION SHEAR/ROLL 45 DEG. C/R	1365 740 775	3650 740 2445	2.00 2.00 3.20
CB1400-30-[]	4.25	5.25	COMPRESSION SHEAR/ROLL 45 DEG. C/R	905 420 525	2250 560 1250	2.40 2.40 3.60
CB1400-40-[]	4.90	5.65	COMPRESSION SHEAR/ROLL 45 DEG. C/R	665 320 400	1700 425 1145	2.80 2.80 4.00
CB1400-50-[]	5.40	6.13	COMPRESSION SHEAR/ROLL 45 DEG. C/R	500 260 245	1250 380 750	3.20 3.20 4.40
CB1400-60-[]	6.10	7.10	COMPRESSION SHEAR/ROLL 45 DEG. C/R	265 145 165	525 165 360	4.00 3.60 5.20

NOTES

- ALL DIMENSIONS ARE IN INCHES. INTERPRET PER ANSI Y14
- ALL DIMENSIONS ARE NOMINAL AND FOR REFERENCE ONLY

OTHER MATERIALS, COMPOUNDS, OR FINISHES WITH EQUAL OR SUPERIOR PROPERTIES MAY BE SUBSTITUTED AS THEY BECOME AVAILABLE.

CERTIFIED FOR:

JOB NAME: _____
 CUSTOMER: _____
 CUSTOMER P.O.: _____
 SALES ORDER: _____

**MODEL CB1400 SERIES
 WIRE ROPE ISOLATOR**



THE VMC GROUP
The Power of Together
 Bloomingdale, NJ 07403
 Houston, TX 77041

SCALE:

NONE

SHEET:



DRAWING NO.:

REVISION